

JJN – 300Vac, 1-1200A, Fast-Acting Fuses



Description: Advanced protection Class T current-limiting, fast-acting fuses.

Catalog Symbol: JJN-(amp)

Ratings:

- Volts – 300Vac (1-10A)
- 300Vac, 160Vdc (15-600A)
- 300Vac, 170Vdc (700-1200A)
- Amps – 1-1200A
- IR – 200kA Vac RMS Sym.
- 20kA Vdc (15-600A)
- 100kA Vdc (700-1200A)

Agency Information:

CE, UL Listed, Std. 248-15, Class T, Guide JDDZ, File E4273
 CSA Certified, C22.2 No. 248.15, Class 1422-02, File 53787

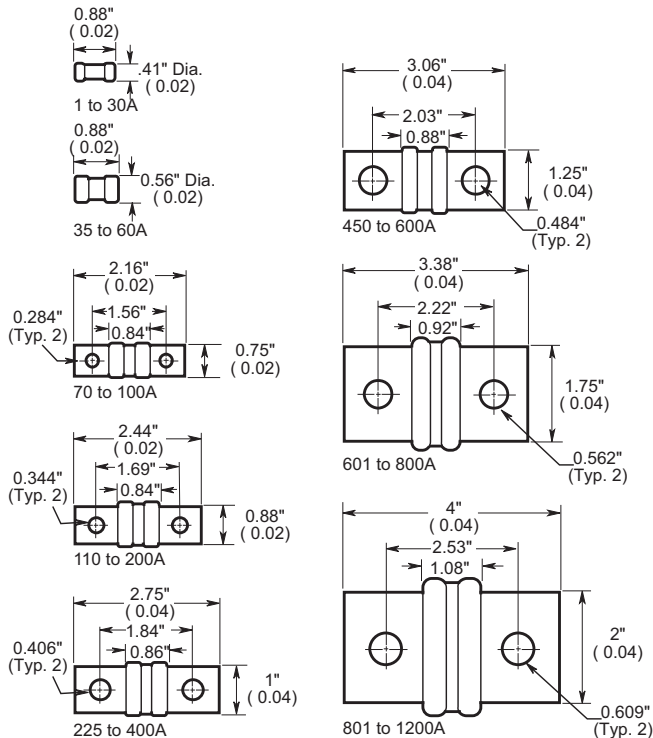
Catalog Numbers (amps)

JJN-1	JJN-50	JJN-250
JJN-2	JJN-60	JJN-300
JJN-3	JJN-70	JJN-350
JJN-6	JJN-80	JJN-400
JJN-10	JJN-90	JJN-450
JJN-15	JJN-100	JJN-500
JJN-20	JJN-110	JJN-600
JJN-25	JJN-125	JJN-700
JJN-30	JJN-150	JJN-800
JJN-35	JJN-175	JJN-1000
JJN-40	JJN-200	JJN-1200
JJN-45	JJN-225	

Carton Quantity and Weight

Amp Rating	Carton Qty.
1-30	10
35-60	10
70-100	5
110-200	1
225-400	1
450-600	1
700-800	1
1000-1200	1

Dimensions – in



Features:

- Small, space-saving fuses provide a high degree of current limitation on short-circuits for excellent component protection
- Commonly applied in electric heat circuits, load center, disconnect switches, and meters
- The small size of the JJN Class T fuses permits installation in panelboards and control centers for system upgrading when existing circuit breakers cannot safely interrupt larger available short-circuit currents
- High speed of response for semiconductor protection

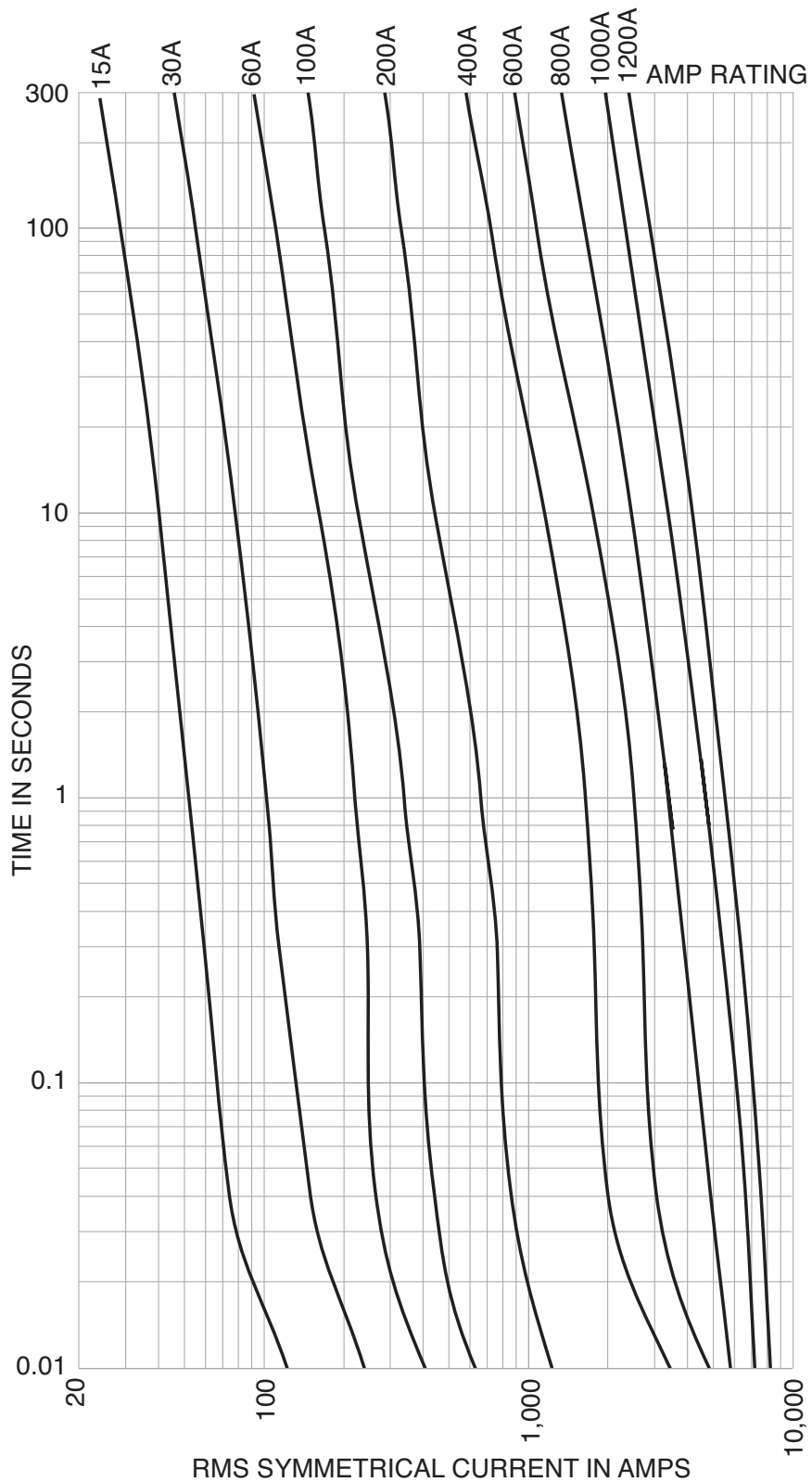
Recommended Fuse Blocks

Fuse Amps	1-Poles	2-Pole	3-Pole	4-Pole
1/2-30	—	T30030-2_	T30030-3_	T30030-4_
35-60	—	T30060-2_	T30060-3_	T30060-4_
70-100	—	T30100-1_	T30100-2_	T30100-3_
110-200	T30200-1_	—	—	—
200	1B0083	—	—	—
225-400	T30400-1_	—	—	—
450-600	T30600-1_	—	—	—

For additional information on 300 volt Class T fuse blocks, see Data Sheet # 1115.

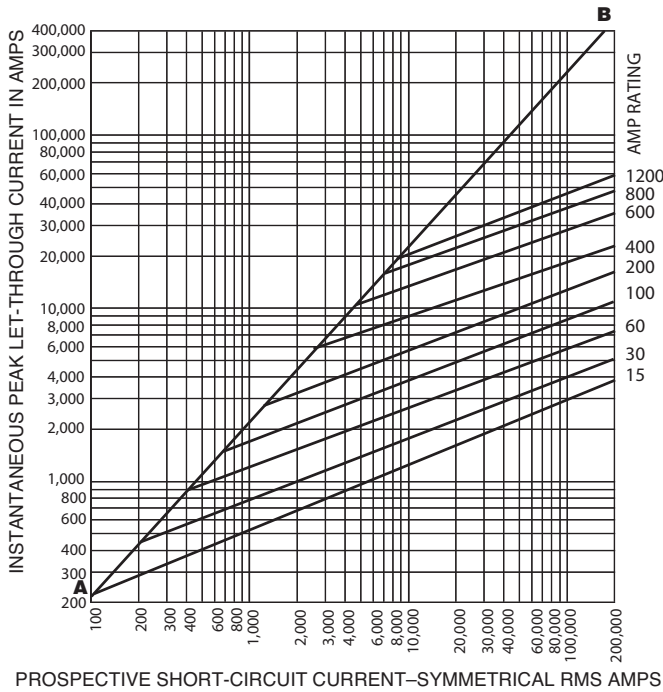
JJN – 300Vac, 1-1200A, Fast-Acting Fuses

Time-Current Curves - Average Melt



JJN – 300Vac, 1-1200A, Fast-Acting Fuses

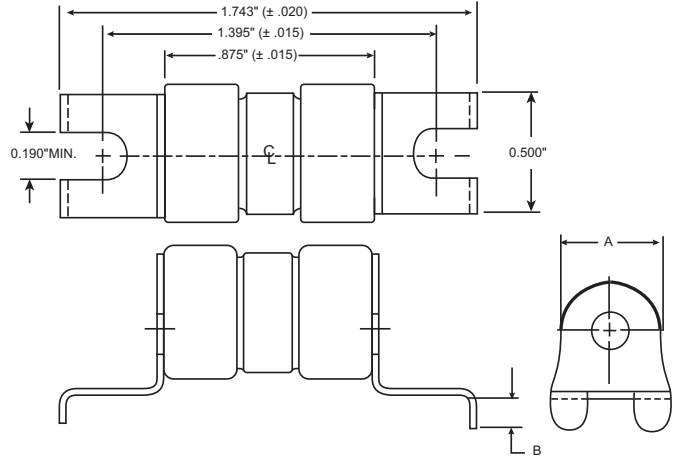
Current-Limitation Curves



Custom Designs

Printed circuit board versions available up to 60 amps.
Consult factory for details.

Dimensions - in



Fuse Amps/Catalog Number	A	B
JJN-(1-30)L	0.406	0.125
JJN-(35-60)L	0.563	0.125
JJN-(35-60)L-01	0.563	0.165

Current-Limiting Effects

Prosp. S.C.C.	Let-Through Current (Apparent RMS Symmetrical Vs. Fuse Rating)								
	15A	30A	60A	100A	200A	400A	600A	800A	1200A
500	1000	1000	1000	1000	1000	1000	1000	1000	1000
1000	1000	1000	1000	1000	1000	1000	1000	1000	1000
5000	1000	1000	1000	1000	2000	3000	5000	5000	5000
10,000	1000	1000	1000	2000	2000	4000	6000	7000	9000
15,000	1000	1000	1000	2000	3000	4000	6000	9000	10,000
20,000	1000	1000	1000	2000	3000	5000	7000	10,000	11,000
25,000	1000	1000	2000	2000	3000	5000	7000	10,000	12,000
30,000	1000	1000	2000	2000	3000	5000	8000	11,000	13,000
35,000	1000	1000	2000	3000	4000	6000	8000	11,000	13,000
40,000	1000	1000	2000	3000	4000	6000	9000	11,000	13,000
50,000	1000	1000	2000	3000	4000	7000	9000	12,000	15,000
60,000	1000	1000	2000	3000	4000	7000	10,000	13,000	16,000
70,000	1000	1000	2000	3000	5000	7000	10,000	14,000	17,000
80,000	1000	2000	2000	3000	5000	8000	11,000	15,000	17,000
90,000	1000	2000	2000	3000	6000	8000	11,000	15,000	18,000
100,000	1000	2000	2000	4000	6000	8000	12,000	16,000	19,000
150,000	1000	2000	3000	4000	6000	9000	13,000	17,000	22,000
200,000	2000	2000	3000	4000	7000	9000	15,000	19,000	23,000

The JJN-XXL products are UL Component Recognized under Guide JFHR2, File E56412.

The only controlled copy of this Data Sheet is the electronic read-only version located on the Cooper Bussmann Network Drive. All other copies of this document are by definition uncontrolled. This bulletin is intended to clearly present comprehensive product data and provide technical information that will help the end user with design applications. Cooper Bussmann reserves the right, without notice, to change design or construction of any products and to discontinue or limit distribution of any products. Cooper Bussmann also reserves the right to change or update, without notice, any technical information contained in this bulletin. Once a product has been selected, it should be tested by the user in all possible applications.